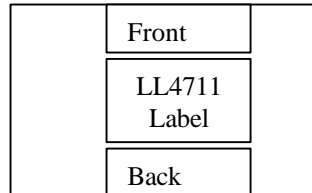


Mains Transformer for Tube Amplifiers (Glass Amp) LL4711

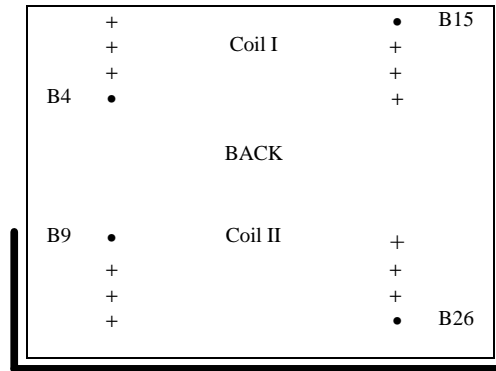
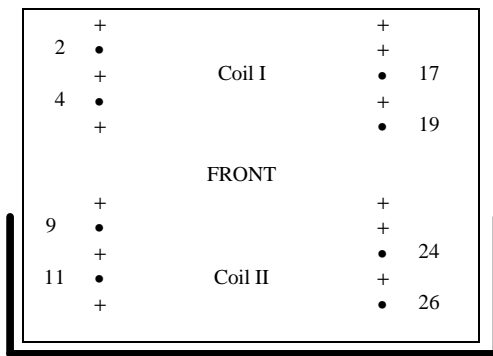
C-core mains transformer. The core is assembled with a small air-gap to compensate for any mains DC-unbalance.
Estimated power rating 200 VA. Magnetic stray is extremely small if secondaries of the two coils are loaded identically.

Dimensions: (Length x Width x Height (mm)):	115 x 80 x 78
Mounting:	4 x M4 threaded holes, distance 53 x 90 mm
Weight:	2.5 kg

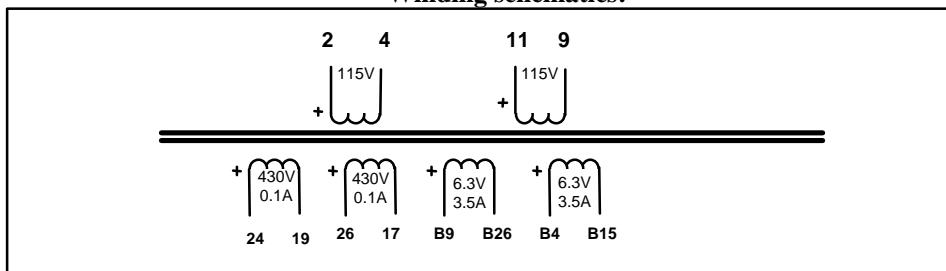
Orientation:
(seen from top)



Pinout



Winding schematics:



Primary connected in series for 230V mains, in parallel for 115V mains.

430V secondaries are split between coils.

The 6.3V secondaries should be used with similar load for low magnetic stray.

Copper resistance, no load output voltages and recommended transformer currents (rms) with primary connected to 234 V serial / 117V parallel

Primary res. Serial/parallel	Sec 1	Sec 2	Sec 3	Sec 4
8 Ω / 2 Ω	65 Ω / 439V 0.1 A	65 Ω / 439V 0.1A	0.1 Ω / 6.5V 3.5 A	0.1 Ω / 6.5V 3.5 A

Please note! Output current from rectifier: 63% of above with condensor input rectifier, 95% of above with choke input rectifier.