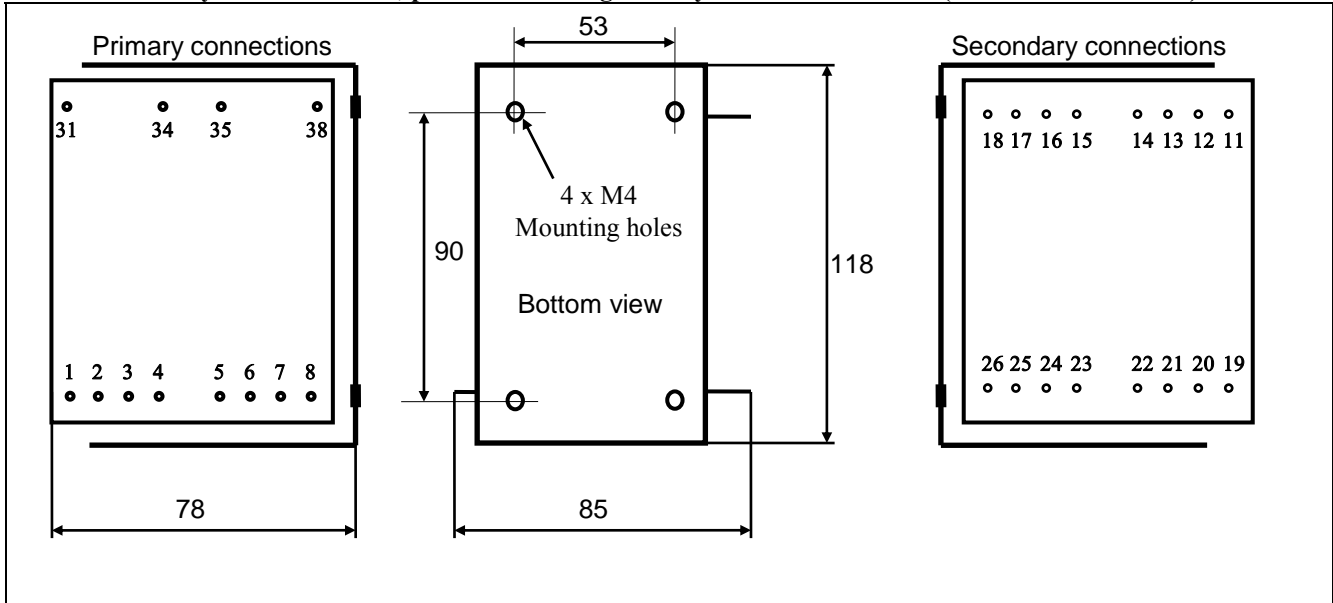


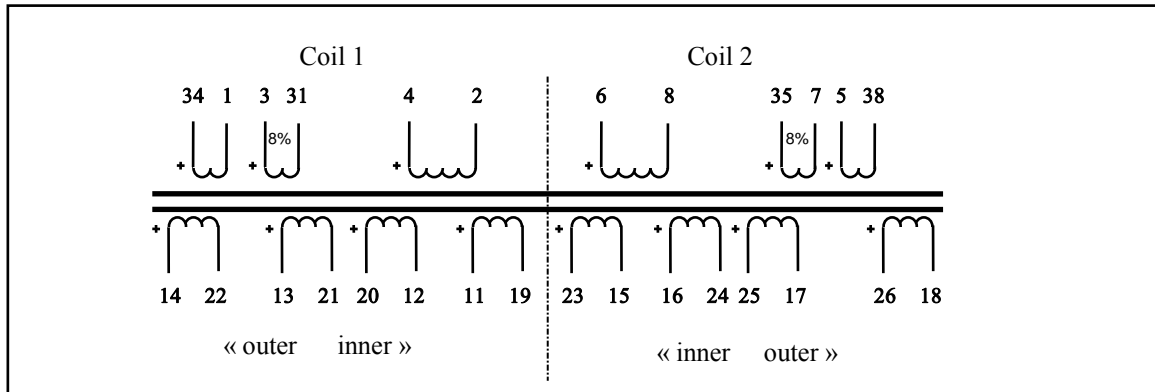
## Tube Amplifier Output Transformer LL1620CFB8% (for Cathode FeedBack)

The LL1620CFB is a version of the LL1620 where one primary winding on each coil has been split to support Push-Pull Cathode Feedback applications with 8% feedback. For all data not presented in this sheet, please refer to the regular LL1620 data sheet.

### Physical dimensions, pin and mounting hole layout for LL1620CFB (all dimensions in mm)



### Winding schematics:



### LL1620CFB

Primary connection for push-pull output stage with 8% cathode feedback

R150220 PL

